

SupplyScanner

Mobile Handheld Scanning Solution



SupplyScanner manages key assets and supplies in storerooms and open bin environments using wireless technologies. Accurate asset and inventory management is now at your fingertips.

The SupplyScanner delivers a scalable solution to expand the range and coverage of your inventory management needs while wirelessly accounting for all your activity.

With the SupplyScanner, employees can quickly enter data, issue and return items and perform inventory counts from anywhere in your operating environment.

SupplyScanner optimizes supply chain efficiencies and significantly reduces stock-outs while applying client business rules for usage and replenishment.

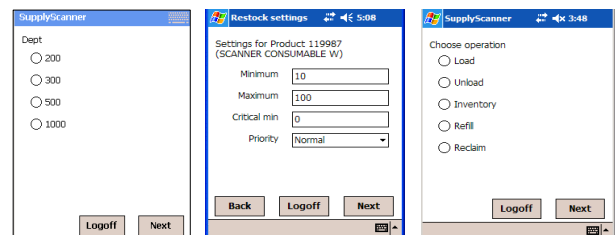
Additional SupplyScanner benefits:

- Improve accountability by allocating costs to where supplies are being used
- Leverage point-of-use investment to capture storeroom transactions
- Consolidate vended and storeroom-based inventory into a single database
- 24/7 Web-based and automatically scheduled reporting
- Utilize proven Symbol technology
- Support multiple facilities within one company, distribution centers, and storerooms
- Share collaborative data with partners, suppliers and internal departments – on demand or schedule-based

Key Features:

- **Wireless Mode** – Real-time operation using standard Wi-Fi
- **Industrial Strength** – A rugged unit that is able to withstand a drop from six feet
- **Quick Access Time** – Employees can easily take and return items
- **Scalable Architecture** – Multiple SupplyScanners can be managed by a single SupplyLink
- **Web Accessible** – SupplyPro's reporting and administration capabilities are available from any web-enabled device

Sample Screen Shots



SupplyLink™ - Universal Touch Screen Control Module

SupplyLink is a universal control module that drives SupplyPro Point-of-Use devices. SupplyLink's easy-to-use touch screen interface is a visual gateway to the SupplyPort and a world of productivity-enhancing information. Each SupplyLink can drive one or many SupplyPro products, including SupplyBay, SupplyLocker, SupplyScanner and SmartDrawer.



About SupplyPro

SupplyPro delivers the technology and support you need to implement Point-of-Use automation and control programs with confidence to improve productivity and drive costs out of your business. Our consultative services provide all of the support and project management expertise you need to make your implementation a success. We stand by you every step of the way. **For more information visit www.supplypro.com or call 1.858.587.6502 or 1.513.671.4933 x. 107.**

www.supplypro.com

SupplyScanner